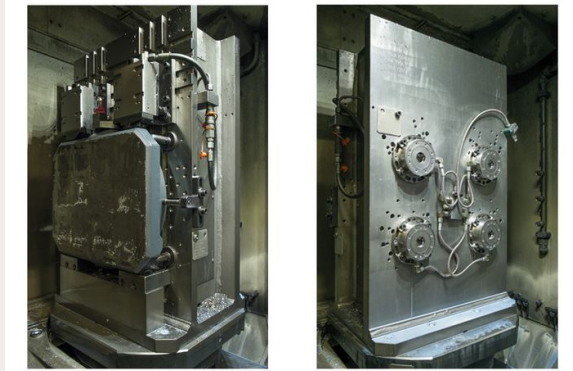


## Hydraulic workpiece clamping

Productivity | Process Optimisation



### Series

H	F	C	HF	MCH	MCH-C
MC	MCI	MCP-H	MCS	BEA	

### Control

FANUC	SIEMENS Powerline	SIEMENS Solutionline
uni-Pro 90	SINUMERIK ONE	

More convenience, more precision, more reliability: with hydraulic workpiece clamping, you can securely clamp workpieces at 60 or 200 bar and rely on the very best machining quality.

## Characteristics

- \_ Feedthrough of lines for 5-point media interface through pallet
- \_ Maximum of four coupling elements available for hydraulic functions
- \_ Additional air transfer via central blow-off nipple

## Benefits

- \_ Rapid, automated and reliable workpiece clamping

## Requirements

- \_ Manually rotating setting station. Possible only if the machine is equipped with the >>Workpiece setting station, 4 x 90° manual pallet rotation<< option.