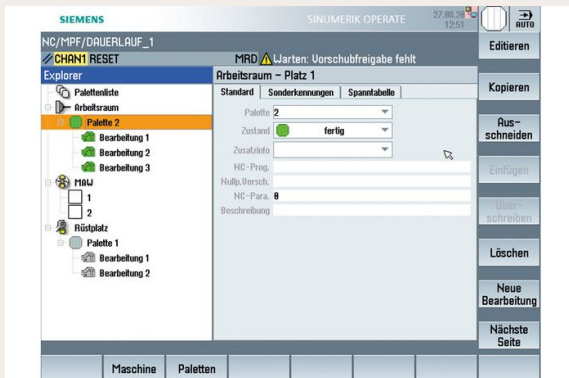


Multiple clamping

Productivity | Process Optimisation



Series



Control



This HELLER upgrade package allows several workpieces to be assigned to each pallet via separate CNC programs, or several CNC programs to be run for each pallet in succession.

Characteristics

- _ Up to 16 independent machining programs per pallet
- _ Workpiece status and CNC program information (zero offset and parameters) are available for the pallet and for each of the machining programs

Benefits

- _ More flexibility; optimum utilisation of the clamping fixture for a broad range of types

Requirements

- _ for single machines only