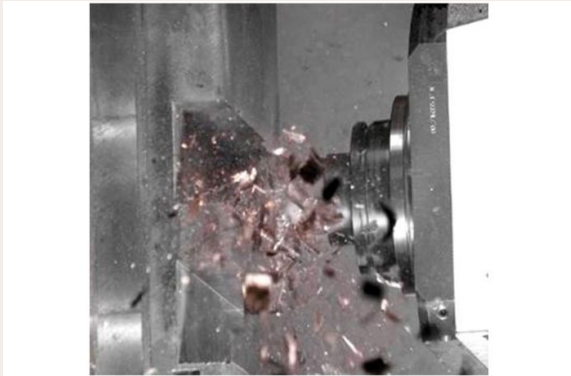


Adaptive control

Productivity | Performance Increase



Series

H

F

C

MCH

MCH-C

MCi

Control

SIEMENS Solutionline

SIEMENS Powerline

Your day-to-day production demands flexibility and adaptability – also of your control system. Control systems with default process variables quickly reach their limits here. With adaptive control, you can react directly to measured process variables.

Characteristics

- _ A second process variable (e.g. path-specific or axis-specific feed rate) can be controlled based on a measured process variable (such as spindle current)
- _ Measurable and controllable process variables: drive utilisation, drive impact, target drive torque value, actual current value of axis or spindle

Benefits

- _ More production reliability thanks to optimised process costs and machine utilisation
- _ Optimised process costs: control of the work process for time and cost optimisation
- _ Optimised machine utilisation: adaptive control constraint of the work process